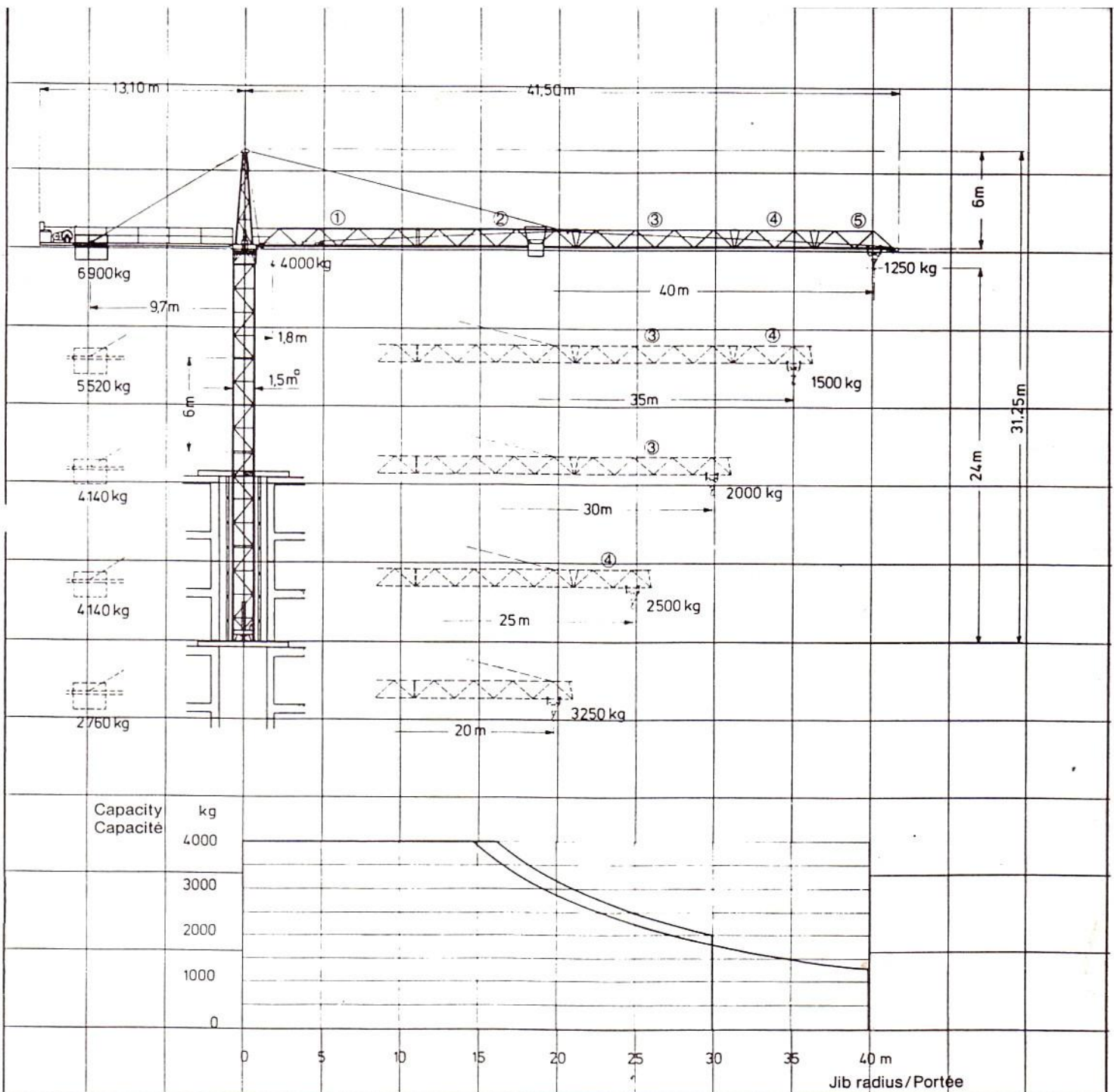




WK 60 HR

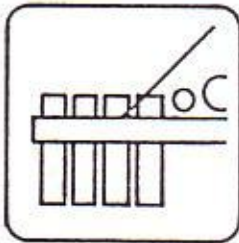


Loaddata (kg)			Charges (kg)		
Jib radius Portée	20 m - jib Flèche 20 m	25 m - jib Flèche 25 m	30 m - jib Flèche 30 m	35 m - jib Flèche 35 m	40 m - jib Flèche 40 m
40,0 m	-	-	-	-	1250
35,0 m	-	-	-	1500	1480
30,0 m	-	-	2000	1800	1780
25,0 m	-	2500	2470	2240	2200
20,0 m	3250	3200	3180	2890	2850
15,0 m	4000	4000	4000	3970	3920
10,0 m	4000	4000	4000	4000	4000
4000 kg up to jusqu'à	16,50 m	16,30 m	16,20 m	14,90 m	14,70 m

Colli list WOLFF CRANE WK 60 HR			Liste des colis grue WOLFF WK 60 HR						
Pos Pos	Quantity Nombre	Description Designation		L (m)	B (m)	H (m)	Weight Poids (kg)	Volume Volume (m³)	
1	1*	Slewing frame Chassis de rotation		1,74	1,85	1,00	1750	3,22	
	1	Slewing frame with drive Chassis de rotation avec commande		1,74	1,85	2,10	2050	6,76	
3	1	Towertop (A-frame) Pointe de tour		6,01	1,13	1,13	1000	7,67	
4	1	Counter jib Contreflèche		10,16	1,32	0,35	820	4,69	
5	1	Hoist unit w. control cabinet Treuil de levage		2,22	1,85	1,70	2400	6,98	
6	1	Jib part no. 1 Pièce de flèche No. 1		10,09	1,32	1,21	1200	16,12	
7	1	Jib part no. 2 Pièce de flèche No. 2		10,25	1,26	1,21	760	15,63	
8	1	Jib part no. 3 Pièce de flèche No. 3		10,25	1,26	1,20	600	15,5	
9	1	Jib part no. 4 Pièce de flèche No. 4		5,25	1,26	1,20	320	7,94	
10	1	Jib part no. 5 Pièce de flèche No. 5		5,25	1,26	1,20	290	7,94	
11	1	Standard tower element Element standard de tour		6,00	1,50	1,50	1350	13,50	
12	1*	Tower elements with jib part El. de tour avec pièce de flèche		12,00	1,50	1,50	4800	27,00	
J	1	Basic tower element Pièce de base de la tour		6,00	1,50	1,50	1600	13,50	
14	1*	Towerelement with climbing gear Element de tour et disp. grimp.		6,00	1,50	1,50	2100	13,50	
15	1	Wooden box with different parts Caisse en bois avec diff. parts.		1,60	1,25	1,25	220	2,50	

* Recommended for sea transportation

* Recommandé pour transport maritime



Counterweights

WK 60 HR

HW 60-HR								
20 m Jib	<table border="1" style="display: inline-table; vertical-align: middle;"> <tr><td>1,38t</td></tr> <tr><td>free</td></tr> <tr><td>free</td></tr> <tr><td>free</td></tr> <tr><td>1,38t</td></tr> </table> <table border="1" style="display: inline-table; vertical-align: middle; margin-left: 20px;"> <tr><td>Total weight</td></tr> <tr><td>2,76t</td></tr> </table>	1,38t	free	free	free	1,38t	Total weight	2,76t
1,38t								
free								
free								
free								
1,38t								
Total weight								
2,76t								
25 m Jib	<table border="1" style="display: inline-table; vertical-align: middle;"> <tr><td>1,38t</td></tr> <tr><td>free</td></tr> <tr><td>1,38t</td></tr> <tr><td>free</td></tr> <tr><td>1,38t</td></tr> </table> <table border="1" style="display: inline-table; vertical-align: middle; margin-left: 20px;"> <tr><td>Total weight</td></tr> <tr><td>4,14t</td></tr> </table>	1,38t	free	1,38t	free	1,38t	Total weight	4,14t
1,38t								
free								
1,38t								
free								
1,38t								
Total weight								
4,14t								
30 m Jib	<table border="1" style="display: inline-table; vertical-align: middle;"> <tr><td>1,38t</td></tr> <tr><td>free</td></tr> <tr><td>1,38t</td></tr> <tr><td>free</td></tr> <tr><td>1,38t</td></tr> </table> <table border="1" style="display: inline-table; vertical-align: middle; margin-left: 20px;"> <tr><td>Total weight</td></tr> <tr><td>4,14t</td></tr> </table>	1,38t	free	1,38t	free	1,38t	Total weight	4,14t
1,38t								
free								
1,38t								
free								
1,38t								
Total weight								
4,14t								
35 m Jib	<table border="1" style="display: inline-table; vertical-align: middle;"> <tr><td>1,38t</td></tr> <tr><td>1,38t</td></tr> <tr><td>free</td></tr> <tr><td>1,38t</td></tr> <tr><td>1,38t</td></tr> </table> <table border="1" style="display: inline-table; vertical-align: middle; margin-left: 20px;"> <tr><td>Total weight</td></tr> <tr><td>5,52t</td></tr> </table>	1,38t	1,38t	free	1,38t	1,38t	Total weight	5,52t
1,38t								
1,38t								
free								
1,38t								
1,38t								
Total weight								
5,52t								
40 m Jib	<table border="1" style="display: inline-table; vertical-align: middle;"> <tr><td>1,38t</td></tr> <tr><td>1,38t</td></tr> <tr><td>1,38t</td></tr> <tr><td>1,38t</td></tr> <tr><td>1,38t</td></tr> </table> <table border="1" style="display: inline-table; vertical-align: middle; margin-left: 20px;"> <tr><td>Total weight</td></tr> <tr><td>6,9t</td></tr> </table>	1,38t	1,38t	1,38t	1,38t	1,38t	Total weight	6,9t
1,38t								
1,38t								
1,38t								
1,38t								
1,38t								
Total weight								
6,9t								